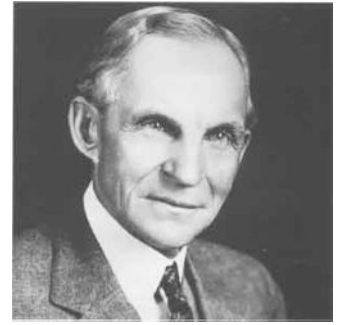


Henry Ford (1863 –1947) was the founder of the Henry Ford Motor Company. He was the inventor of the assembly line. His mass production made cars affordable to everybody.

Today, Ford is the 5th largest automaker in the world with over 5 million cars sold.

Henry Ford was born on his family’s farm in Michigan, America. He did not like farming. At 15 he became an apprentice in a machine shop. In



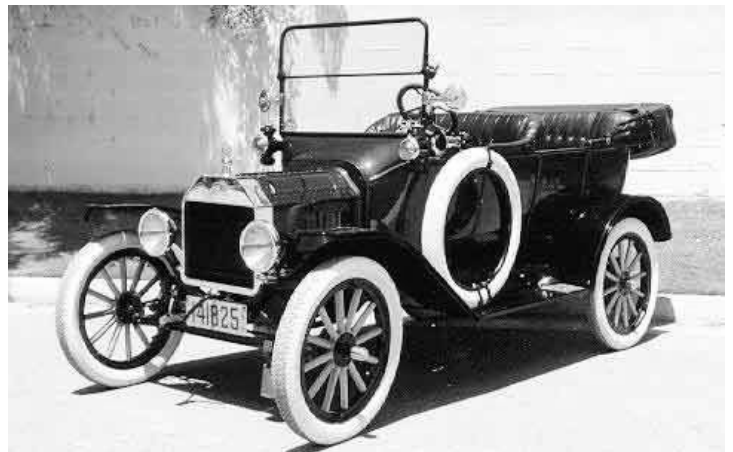
1893 he built his first car. He drove it for about 1500 kilometres, then sold it and built two bigger cars. Then, in 1903, he started the Ford Motor Company.

Using light, strong steel, he built cheap cars for everyone to buy. In 1908, he built the first Ford “Model T”. He sold this “Tin Lizzie” for \$825. He was soon selling a hundred cars a day. It became the car that "put America on wheels". By 1927, 15 million model Ts had been made, and the Ford Motor Company was worth 700 million dollars.

The cars were made on an assembly line: as they slowly moved the 300 metres through the factory, workers completed simple single tasks on them. It was boring work, but Ford paid the highest wages in the industry.

The cars were made on an assembly line: as they slowly

Early Fords were simple, cheap and reliable. ANYONE CAN DRIVE A FORD or EVERYBODY CAN AFFORD A FORD were the slogans. But keeping things simple sometimes meant less choice. “You can have any colour you like,” said Henry Ford of his Tin Lizzie, "so long as it’s black”.



- founder:** initiator
- inventor:** creator
- assembly line:** a manufacturing process
- afford:** have enough money
- apprentice:** trainee, learner
- steel:** iron
- tin:** silvery white metal
- wheel:** roll

- worth:** value
- task:** job
- boring:** uninteresting
- wages:** salaries
- reliable:** consistent
- mean:** expect
- choice:** selection

HAS IT ANYTHING TO DO WITH CARS? - DELETE SIX WORDS:

garage	wheel	petrol	sail
windshield	mast	brake	tank
number plate	harbour	lights	spare tyre
skipper	motor	driver	seat
outboard	starter	merry-go-round	battery
radiator	clutch	indicator	exhaust